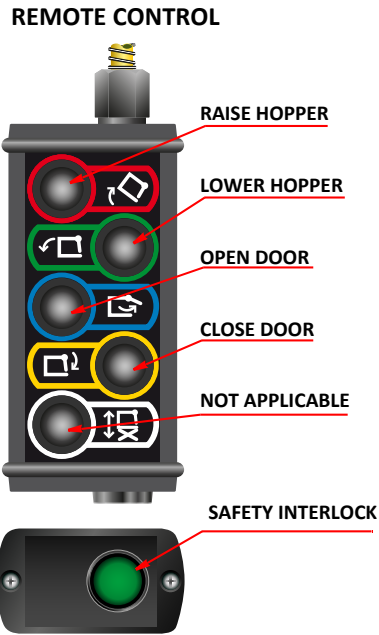
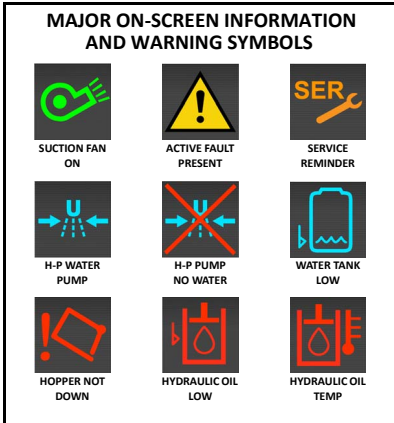
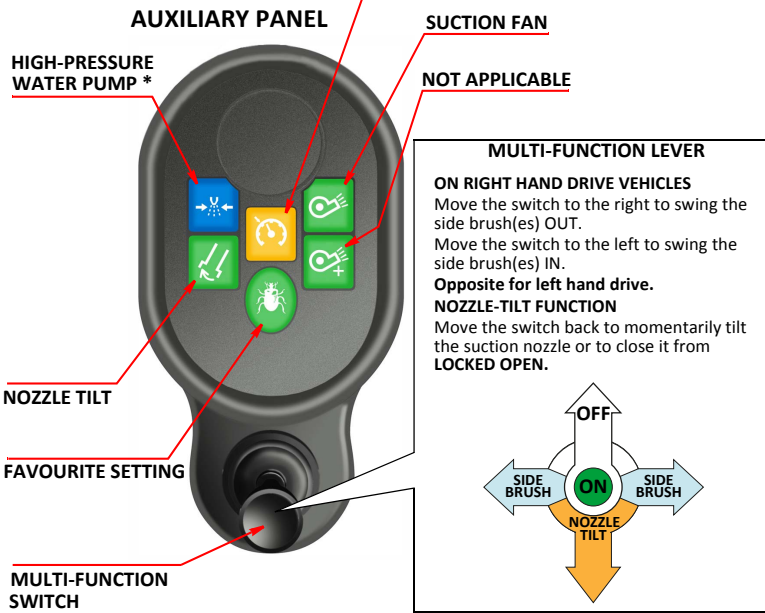
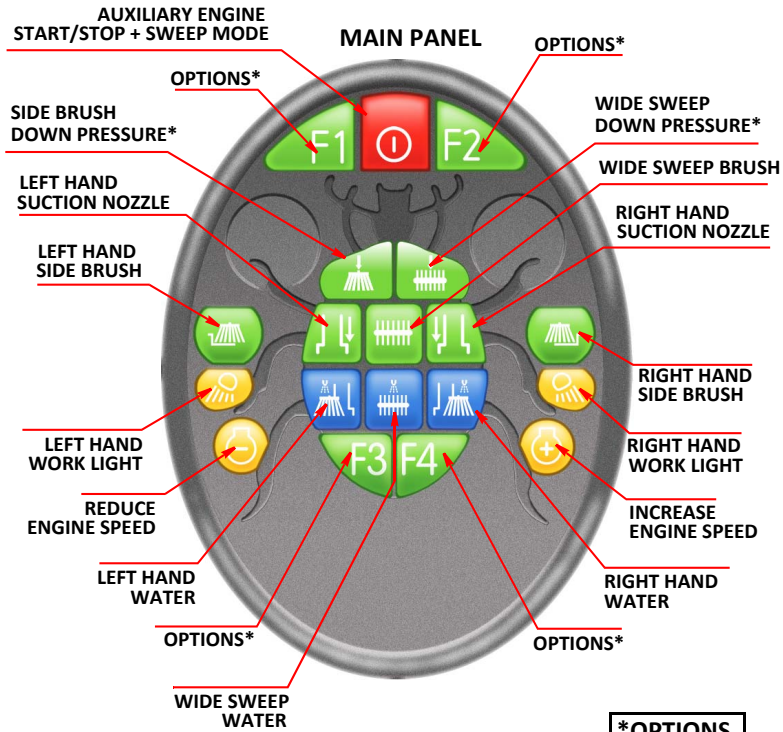


SCARAB M6 - Abbreviated Operating Instructions



Press and hold down the Safety Interlock and the appropriate control switch.

! For safety reasons only operate the Remote Control controls from outside the vehicle, from a vantage point that affords a good view of the sweeper and its surroundings.

C Before closing the rear door, ensure adequate clearance and seal cleanliness.

TO ENTER SWEEP MODE

VEHICLE ENGINE RUNNING. AIR TANKS FULL.

1. Press the Start Switch on the main panel to start the auxiliary engine and enter sweep mode.
2. Preselect the required sweeping combination. As each item is selected the corresponding symbol on the LCD monitor will change as illustrated below. Start the suction fan.
3. Engage a suitable gear ratio and release the clutch to commence sweeping.

WHEN REVERSING

1. When reverse gear is selected, all sweeping gear will automatically stop and retract.
2. When reverse is deselected, all active sweeping equipment will redeploy.

LEAVING SWEEP MODE

1. Move the multi-function switch forward to the OFF position to stop and retract all active sweeping equipment.
2. Switch off the suction fan.

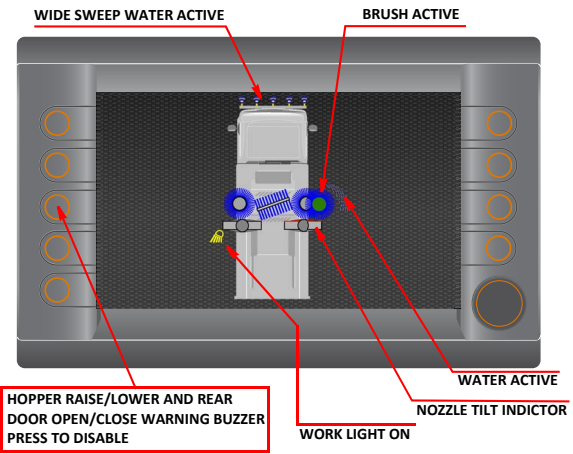
REAR DOOR & HOPPER CONTROLS

! The hopper safety prop must always be deployed when working beneath a raised hopper. Rear door safety prop must be deployed and when working beneath open rear door.

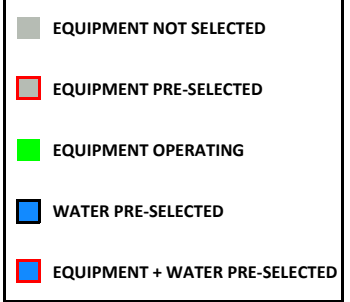
DISCHARGING THE PAYLOAD (TIPPING)

1. Simultaneously press the safety interlock and door open switch, until the door is fully open.
2. Simultaneously press the safety interlock and hopper raise switch, until the hopper is fully raised.

- i** Before lowering the hopper, ensure that the area below it is clear. Stow the hopper prop.
- 3. Simultaneously press the safety interlock and hopper down switch, until the hopper is fully down.
- i** Before closing the rear door, ensure all personnel are clear of the immediate area and that the door seal and seal-mating face are clean. Stow the rear door prop.
- 4. Simultaneously press the safety interlock and door close switch, until the door is fully closed.
- i** Before stopping the auxiliary engine, allow it to idle for at least 2 minutes to allow the turbo-charger to cool down.



MAIN EQUIPMENT COLOUR CODES



i This document is designed as a quick reference guide, to allow the operator to drive the vehicle in Sweep Mode and operate the basic controls. It does not constitute the full operating instructions.

PLEASE REFER TO REVERSE FOR HEALTH & SAFETY ADVICE

HEALTH AND SAFETY



- Only trained operatives should be allowed to drive or work on this machine.
- Never work under a raised hopper or rear door without the appropriate safety prop in position.
- Do not drive the vehicle with the hopper raised. The red warning symbol on the LCD monitor remains illuminated until the hopper is fully down.
- Before working on the vehicle ensure that it is on firm, level ground, apply the hand brake, stop the engine and remove the ignition key.
- Before raising the hopper or opening the rear door, ensure that there is sufficient clearance and it is safe to do so.
- Before starting the auxiliary engine, ensure that all controls are switched off and the vehicle's gearbox is in neutral.
- Before driving the vehicle, ensure that all vehicle checks have been carried out and that all equipment is stowed and that the brush(es) are raised.
- Do not overload the hopper.
- High pressure water can be dangerous, always wear suitable eye protection when operating the high pressure water pump nad when using the lance. Do not direct the water jet at other persons. Beware of electrical installations on public buildings and lamp posts etc. and always exicese extreme caution in public places.
- The suction fan is an extremely heavy rotating mass. Vibrations coming from the suction fan must be investigated, the cause determined and rectified immediately.
- When working on the suction fan. Never attempt to slow or stop the fan by using the hands or by inserting any item into the fan chamber, even at low speed. Failure to comply can result in serious injury.
- When operating the machine in any mode, always be aware of objects and people in the immediate vicinity, especially the rear of the machine when reversing.
- Whatever the situation, remember that the rules of traffic and road safety must be observed.
- While operating this machine the safety and well being of other people are the sole responsibility of the operator.

CAUTIONS



If the suction fan vibrates, it should be cleaned immediately (Refer to the Operating Manual). Prolonged vibration will result in damage to the fan, bearings and, in extreme cases, the hopper.
In the event of a hydraulic leak, stop the auxiliary engine and investigate.
The high and low pressure water pumps must never be permitted to run dry otherwise the seals in the pump will be damaged.
Do not direct the high pressure jet at paintwork or electrical connections on the vehicle.

ROUTINE DAILY MAINTENANCE

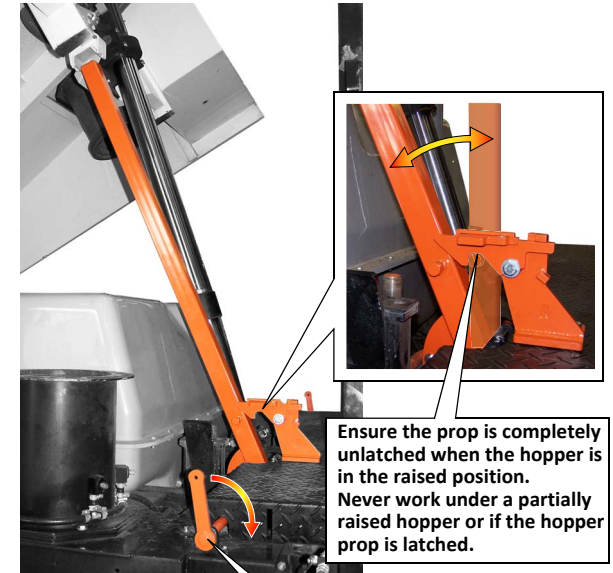
1. Check the vehicle's general condition (Including:- Tyres, lights and all fluid levels) in accordance with the chassis manufacturers' recommendations.
2. Check hydraulic oil level. (Note:- If the oil level is not maintained, the sweeping panel will automatically shutdown until the oil level is correct.)
3. Check the condition of the brushes and remove any items such as string that maybe entangled.
4. Check ground clearance of suction rubber flaps, 20mm front / 30mm rear and side are suitable clearances, suction power can be lost if clearance are incorrect but it is possible to slightly vary these settings to better suit specific sweeping conditions according to the operator's experience.
5. Check water spray jets for blockages.
6. Clean the oil cooler and check that cooling fan functions (Note:- If fitted, red warning light and buzzer will operate when the max temperature is reached).
7. Wash vehicle, ensuring that the suction fan and hopper filter screen are cleaned.
8. Lubricate brush links, pivot points and wide sweep bearings.
9. Remove and clean water strainer elements.
10. Always leave the vehicle with rear door slightly open to allow water to drain out.
11. In frosty weather, drain pumps and tanks, remove water strainer elements, turn on all water sprays.



Hydraulic oil: HPL 32 or an equivalent.
Coolant: Ethylene Glycol (Eskimo long life).
Engine oil: SAE 15W-40

HOPPER SAFETY PROP

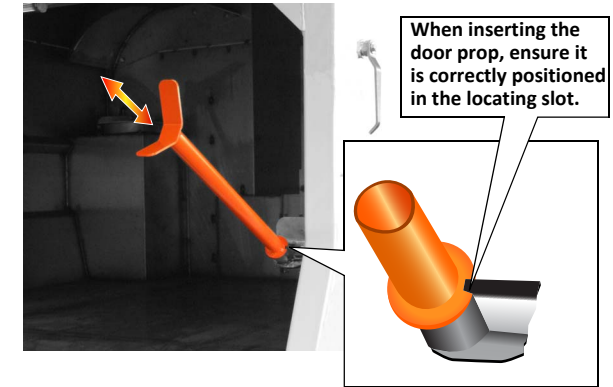
Z039986 Issue 6.0.0



Ensure the prop is completely unlatched when the hopper is in the raised position. Never work under a partially raised hopper or if the hopper prop is latched.

Pull lever as shown, until the hopper prop is correctly latched, before lowering the hopper.

REAR DOOR SAFETY PROP



When inserting the door prop, ensure it is correctly positioned in the locating slot.